



Grass Technology

Zero Grazers



GT100 | GT120 | GT140 | GT160 | Super 6



- Well managed grass is the cheapest feed stuff available on farm.
- Maximising home grown forages has the ability to reduce the cosy of production and drive profitability



Future Grass Technology Ltd.

Borris Business Park, Borris, Co. Carlow R95 E032, Ireland

TEL: (+353) 059 915 7974

EMAIL: info@grasstech.ie

www.grasstech.ie
[@grasstechnology](https://www.instagram.com/grasstechnology)



Grass Technology Zero Grazers

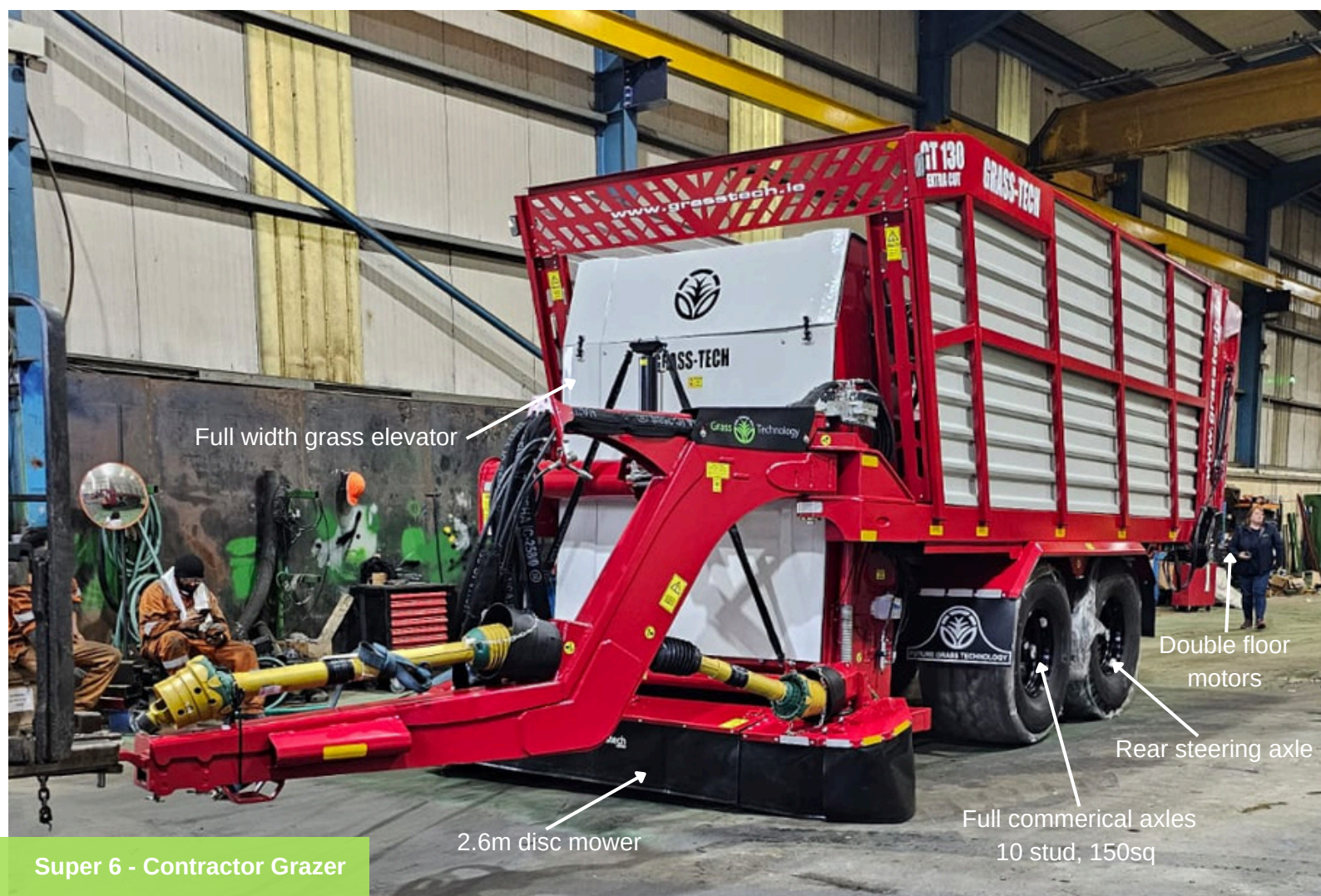
Revolutionising your dairy farming operations with the Zero Grazer, engineered and manufactured in Borris, Co Carlow. Ireland by our world-class leaders and an innovative team committed to excellence.

Our commitment to excellence is showcased through our comprehensive range of ZeroGrazers, which are engineered to provide unmatched efficiency and performance from farm to field. This means optimal land and grass utilisation which allows dairy farmers to manage their herds efficiently, even in limited spaces, boosting milk production and improving livestock diets, embracing sustainable farming with reduced environmental impact.

Our premium zero grazers are available in various sizes, equipped with advanced cutting systems and commercial axles to ensure superior mobility and durability. Each grazer is built on a robust drum mower which boasts of minimum 4 excellent quality blades per drum. With premium features as standard such as floor rollers all bronze brushed, & P-line PTO shaft

Grass Technology's zero grazers are further enhanced with high-quality LED lighting systems and high-visibility safety strips, ensuring they are equipped for both day and night time operations.

With Grass Technology, where the synergy of superior quality and meets innovative design in zero grazers making us your trusted partner in agricultural excellence across the globe.



Grass Technology

GT 100 & GT 120



Premium Features as Standard

- Walterscheid P-Line PTO: Series 6
- Radial pin protection: 600 Nm
- 60mm pivot pin on bronze bush insert
- Floor rollers all bronze bushed
- Automatic oiler system
- Auto fill sensor
- Block greasing system
- Rear mounted camera



Model	Mower	Cutting Width (m)	Cubic Metre Capacity	Blades Per Drum	Power Requirement	Tyres
GT 100	PZ drum mower	2.2	19.2	4	85 HP	19-45/17
GT 120	PZ drum mower	2.2	24.2	4	100HP	550-45/22.5

Service and Support



Quality Manufacturing

Every product is made to the highest standard.



Problem Resolution

We prioritise quick and efficient handling of any issues



Dealer Support

Dedicated service team support. Rapid availability of spare parts.



Goal

Minimize downtime and ensure your machine is back up and running swiftly.

Grass Technology

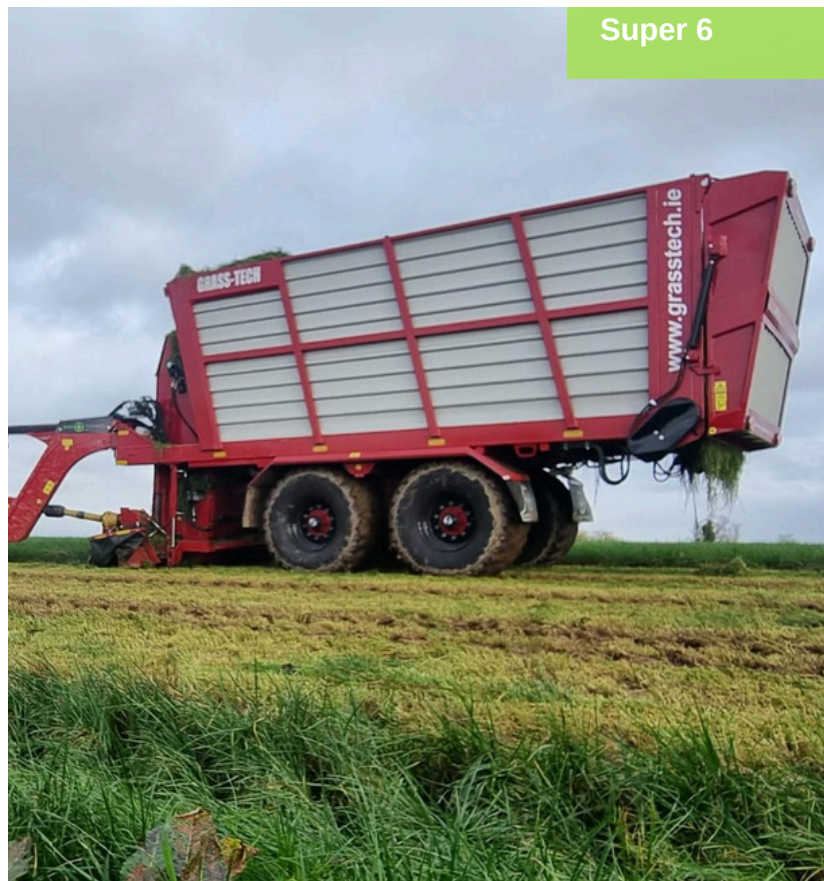
Contractor Grazer Super 6



Super 6

Premium Features as Standard

- 10 stud Bogie axles. (Twin axle - Rear Stearing)
- Air over hydraulic brakes
- Waltersshield P-Line PTO: Series 6
- Elevator full width (2m- top driven, hydraulically)
- Push Frame 100mmx60mm box section
- Steele mower cover & skirts (folding sides)
- 10mm drawbar construction
- Radial pin protection: 600 Nm
- 80mm pivot pin on bronze bush insert
- Twin motor walking floor & floor rollers all bronze bushed
- Mudguards & Mudflaps
- Automatic oiler system
- Auto fill sensor rear door
- Block greasing system
- Rear camera system with colour monitor
- 2 sets of rear highway lights



Model	Mower	Cutting Width (m)	Cubic Metre Capacity	Blades Per Drum	Power Requirement	Tyres
GT Super 6	"Kuhn" Alpine Disc	2.7	26.4	4	150HP	635/650 55R 22.5

Contractor Grazer Super 6 Machine Spec

Grass technology have been the market leader in Zero Grazer production for many years now resulting in the range been highly developed in terms of design and useability resulting in product leading reliability using the Kuhn PZ drum mower and top specification components in our machines. However in the last few years a usage has developed whereby a contractor or large scale Dairy or Beef farmer are cutting many, many loads a day – some in excess of 12. This brought about a design initiative for a large capacity machine that could travel on all terrain for extended usage and lengthening the shoulders of the season, even on some of the extreme ground conditions found in Great Britain and Ireland without damage to ground , tractor or the zero grazer. Whilst we were looking at those parameters we also considered minimizing both maintenance and servicing requirements whilst reducing labour and fuel costs to run this new high usage machine. That resulted in a Wider Mower unit @ 2.6m. Still a Kuhn but an Alpine Disc Mower. Wider 650 tyres and rear steering with air over Hydraulic brakes takes care of handling and stopping. The grass box is LARGE holding up to 8 Tonnes capacity. This is possible in part due to a new full width grass elevator (2m) that is hydraulically driven from the top.

Grass Technology Vision & Mission



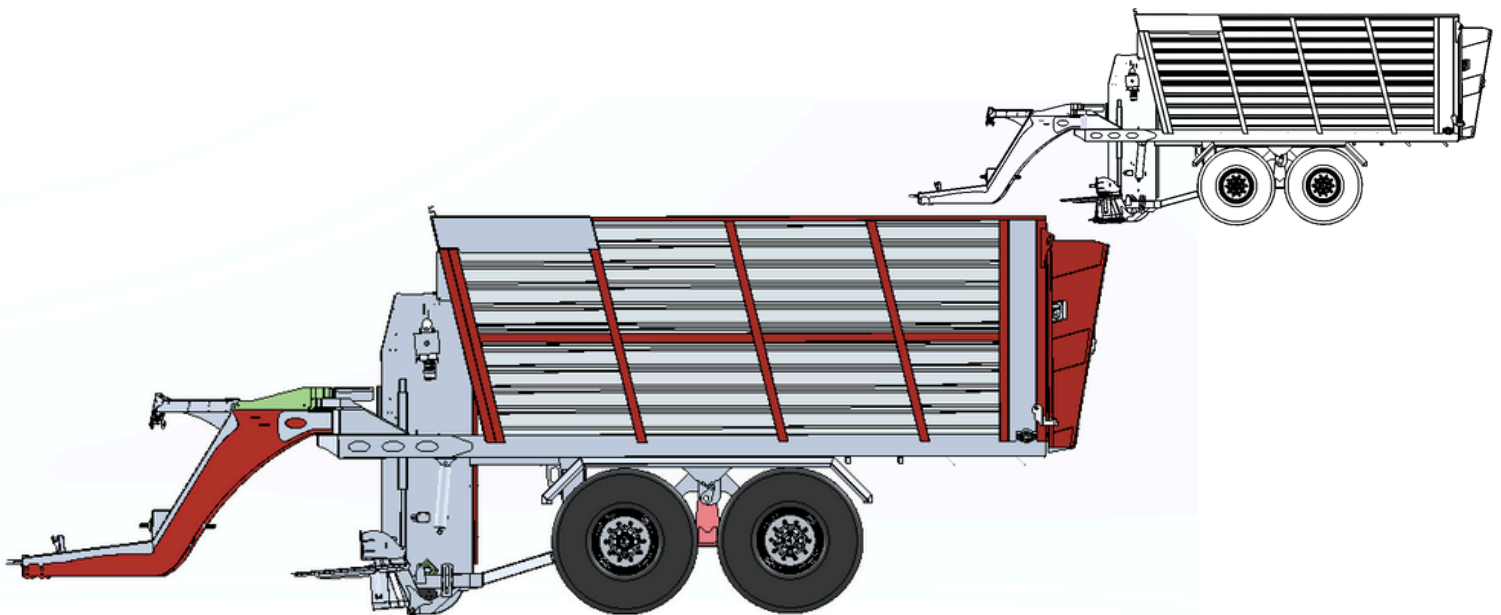
Vision

We strive to educate and empower dairy farmers across the Globe on the benefits of zero grazing.
Our goal is to transform dairy farming into a more sustainable, efficient, and profitable industry by adopting innovative grazing technologies.



Mission

Our mission is to boost profitability in milk production, longevity in the herd, and premium health in animals, strengthen the next farming generation through maximizing every acre & every blade of grass



Expected Improvements



Milk Yield

Farmers have reported substantial milk yields increasing across the board, and much reduced costs, attributing this growth to better grass and land utilization facilitated by our technology.



Natural Production:

Ensuring that milk is produced from the freshest, most natural ingredients — high-quality young grass — giving consumers confidence in the quality and healthiness of their dairy products.



Overall Benefits:

Increased profitability, reduced operational costs (like feed and fertiliser), and enhanced milk quality.
Soil Structure improvements.

Premium Features as Standard

- Walterscheid P-Line PTO: Series 6
- Radial pin protection: 600 Nm
- 60mm pivot pin on bronze bush insert
- Floor rollers all bronze bushed
- Automatic oiler system
- Auto fill sensor
- Block greasing system
- Rear mounted camera



Model	Mower	Cutting Width (m)	Cubic Metre Capacity	Blades Per Drum	Power Requirement	Tyres
GT 140	PZ drum mower	2.2	27.7	4	120HP	550-45/22.5
GT 160	PZ drum mower	2.2	33	4	130HP	550-45/22.5

Optional Extras on all Grazers GT 100 - GT 160

- Fold-down rear door discharge
- Steering axle
- Air brakes
- Bespoke colour
- Mudguards
- Reversing lights
- Hydraulic jack
- Contractors light kit
- Central greasing components
- Mower spacers
- 710 wheels and tyres on GT140
- 620-45/22.5 on GT100

"ZeroGrazing has helped us improve our soil structure and improve grass utilisation on our farm" ~ Aidan McManus , Contiff County Fermanagh.

Why Zero Graze

- **Cost Reduction:** Dairy farmers in the Ireland , Uk and Worldwide report significant cost savings and improved productivity with the Zero Grazing system using Grass Technology Grazers.
- **Seasonal Benefits:** Effective from early spring to late autumn as opposed to the traditional grazing systems, where weather disruptions cause havock and resulting in much reduced forage intakes

Cost Benefits:

- **Reduced Concentrate Use:** Feeding fresh, high-quality young grass can boosts milk yield to 20 liters plus, without supplementation, , thereby reducing the need for additional concentrates.
- **Lower Silage Requirements** as a result of a much longer grazing season through zero grazing.
- **Decreased Wear on TMR Mixers:** Less usage extends the life of Total Mixed Ration mixers.
- **Better Land Utilization:** 40% more grass harvested giving you much improved sworts after every cut.
- **Lower Fertilizer Costs:** Grow your grass from slurry and reduce fertiliser inputs by up to 50%.



Cutting at the right height



- Fewer impurities are introduced into the forage.
- A good cutting height is important to favour high-value forage species (if the mower is too close to the ground, weeds and unwanted species may develop).
- Grassland yield and productivity are improved by preserving the tillers which contain the plant's sugar reserves.



Grass
Technology

Dealership Stamp



Research Innovation
&
Technology Award

**WINNER
2024**

Future Grass Technology Ltd.
Borris Business Park,
Borris, Co. Carlow
R95 E032, Ireland
(+353) 059 915 7974

info@grasstech.ie
www.grasstech.ie
@grasstechnology

